



SILVERWING

Trailer Assembly Instructions

Model-SW9F

2000 GVWR Aluminum Trailer



Attention Customers

If your trailer is missing parts, hardware, or has a problem

**DO NOT RETURN PRODUCT
TO RETAILER**

For any service concerns, contact Silverwing Trailers directly. You
can contact us at:

info@silverwingtrailers.com

For any other questions or concerns, contact us at the email
above. Thank you for your cooperation.

Copyright ©2018

Licensing Your Trailer

Required:

Manufacturer's Statement of Origin (MSO)
Invoice or Bill of Sale
VIN label

After assembling your trailer, you will need to license it in your state.

You may need some (or all) of the following in order to license:

- ♦ Manufacturer's statement of origin (MSO)
- ♦ Receipt, invoice, or bill of sale

Each state has different procedures, and you will need to contact your local DMV for trailer licensing requirements.

Your MSO and VIN label may be shipped separately. When you receive them, remember to place your VIN label on the trailer frame directly above the tongue (see picture).



Please be aware, this product **CANNOT** be returned (to either the retailer or the manufacturer) once licensed.

Before You Assemble

Congratulations on your new SW9F Silverwing trailer!

Expected Assembly Time: approximately 90-120 minutes

This trailer is most easily assembled with two people working together due to the size and weights of items.

WARNING

Do not injure yourself lifting. Never lift alone. Always use a jack when lifting heavy items.

To reduce assembly time, please visit silverwingtrailers.com and watch the SW9F Assembly Video, which can be found here: <https://silverwingtrailers.com/videos>

You will also want to have personal safety equipment. Required equipment includes:

- ♦ Safety Glasses
- ♦ Gloves
- ♦ Ear plugs

Required Tools

Sockets

- ☐ 1/2" (for 5/16" bolts)
- ☐ 9/16" (for 3/8" bolts)
- ☐ 5/8" (for 7/16" bolts)
- ☐ 3/4" (for 1/2" bolts)
- ☐ 13/16" or lug wrench (for lugnuts)

End Wrenches

- ☐ 1/2"
- ☐ 9/16"
- ☐ 5/8"
- ☐ 3/4"

Drill

- ☐ 5/16" drill bit

Work area

- Approximately 7'x15' to easily unfold and install all components
- After the cardboard is removed, spread it out to use as a clean work area
- Save the wood blocks from the trailer packaging for axle installation

Optional:

- An impact wrench will reduce assembly time if available.
- Rubber Mallet (to help with removable side installation)

Unpacking

1. Inspect package for freight damage at time of delivery; must note on manifest
2. Unpack cartons and identify all parts

Parts List

- ☐ 205/75R14 tires (2)
- ☐ 14" tire fenders (2)
- ☐ Axle (1)
- ☐ Tongue/drawbar (1)
- ☐ Hitch coupler (1)
- ☐ Safety chains (2)
- ☐ Front and rear deck plus tailgate (folded)
- ☐ Tailgate bars (2)
- ☐ Fender stiffener bars (2)
- ☐ Removable sides (5 pieces)
- ☐ Bolt packages
 - ☐ #1: Bolts for axle, deck hinge, and tires
 - ☐ (11) 1/2" x 5" bolts, (11) 1/2" nylock nuts, (22) 1/2" washers, (10) lug nuts
 - ☐ #2: Bolts for coupler, drawbar, wheels, fenders, and deck hinge
 - ☐ (10) 5/16" x 3" bolts, (14) 5/16" nylock nuts, (4) 5/16" washers, (4) 5/16" x 1" bolts, (4) 3/8" x 3" bolts, (4) 3/8" nylock nuts, (4) 3/8" washers, (5) 7/16" x 4" bolts, (5) 7/16" nylock nuts
- ☐ Parts for removable sides and tailgate
 - ☐ (10) large wire square lock pins, (2) wire round lock pins

Unpacking, cont.

Jack, coupler, chains, tailgate bars, fender stiffeners,
bolt packages, tailgate bars, wire clips

Tire and Fender (2 boxes)



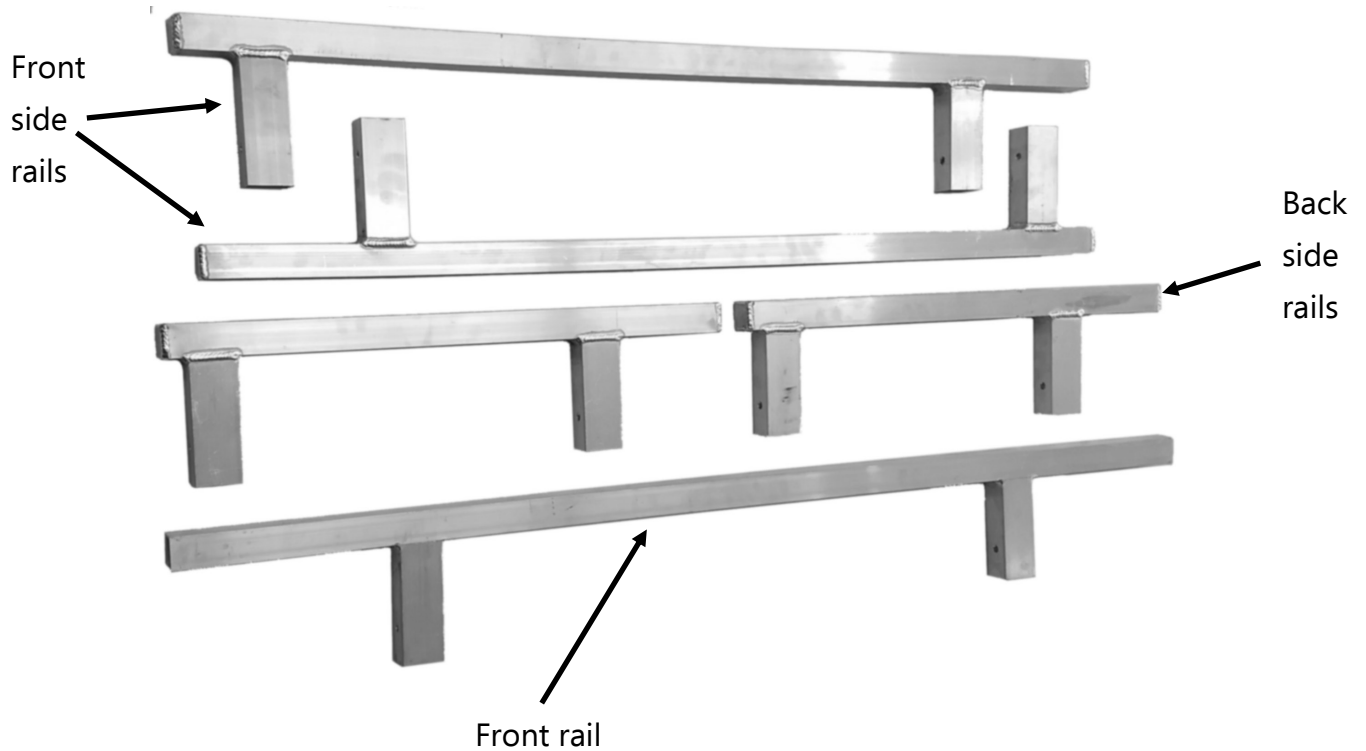
Deck and tailgate (folded)

Axle and tongue

Removable sides (underneath)

Unpacking, cont.

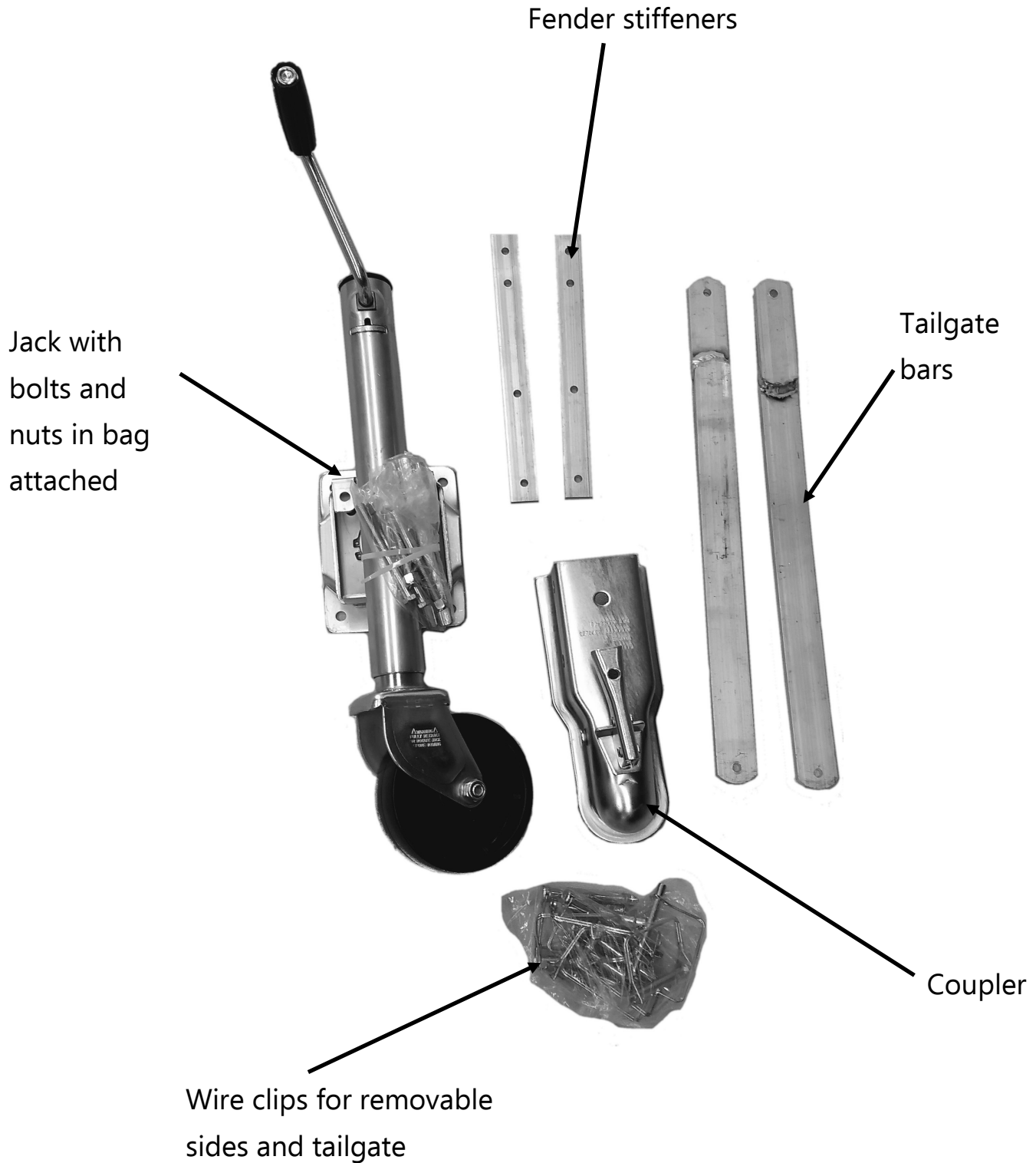
Removeable Sides (5)



Tongue/drawbar



Unpacking, cont.

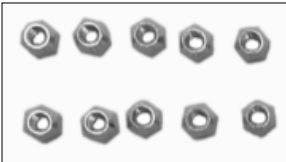


Unpacking, cont.

Bolt Package #1



1/2" x 5" bolts, washers,
and nylock nuts, for
deck and axle



Lug Nuts, for wheels

PLEASE NOTE

Nylock nuts can be distinguished by a nylon ring found inside the threading. Lug nuts will not have this ring

Bolt Package #2



7/16" x 4" bolts and ny-
lock nuts, for tongue and
coupler



5/16" x 1" bolts and
nylock nuts, for fend-
ers stiffener bars



5/16" x 3" bolts, washers,
and nylock nuts for fend-
ers and fender stiffeners



5/16" x 3" bolts and
nylock nuts, for tail-
gate bars



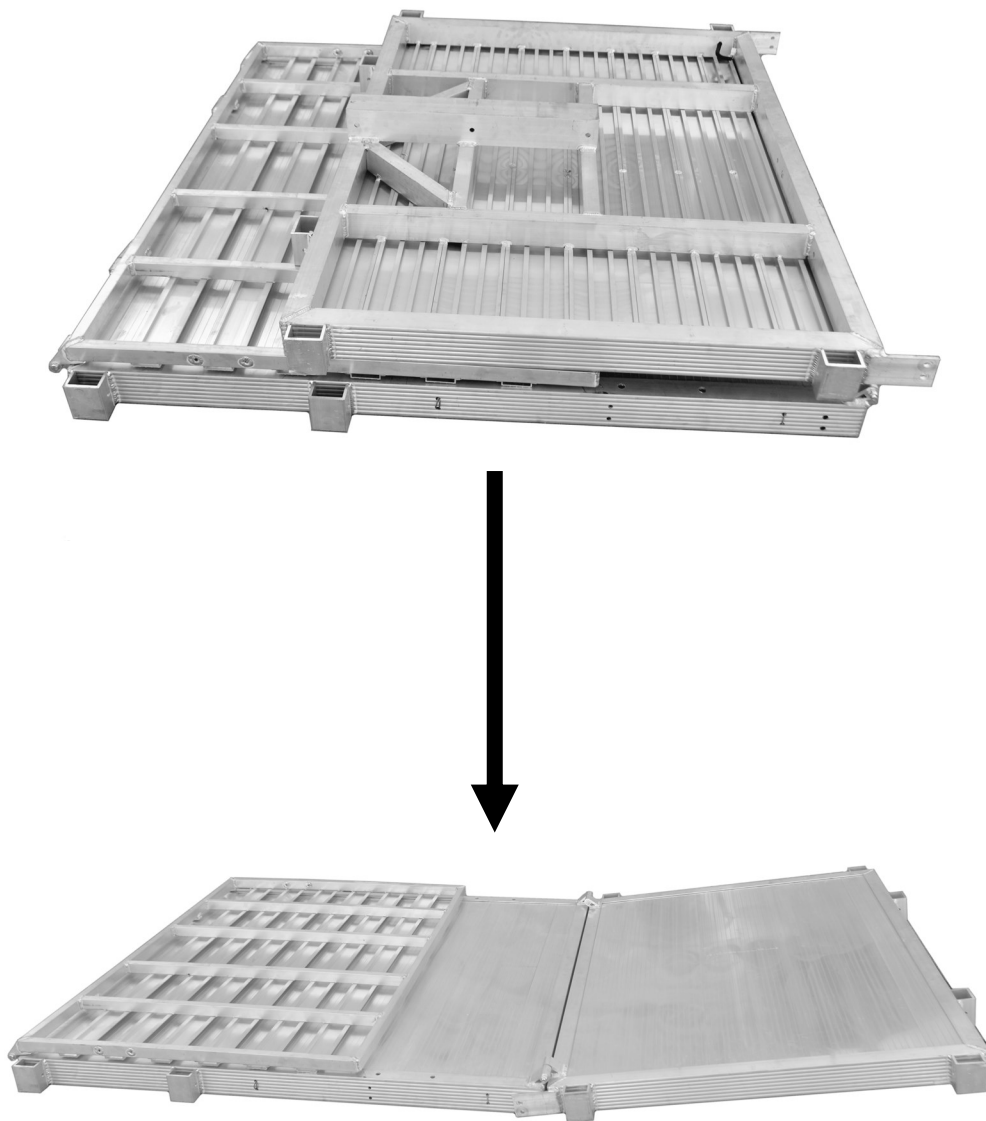
3/8" x 3" bolts, wash-
ers, and nylock nuts,
for deck sides

Step 1: Preparing the Deck

Tools Needed:

None

Set deck on flat surface and unfold so the deck is facing up



Step 2: Deck Bolt Installation

Tools Needed:

Wrenches: 3/4" and 9/16"

Sockets: 3/4" and 9/16"

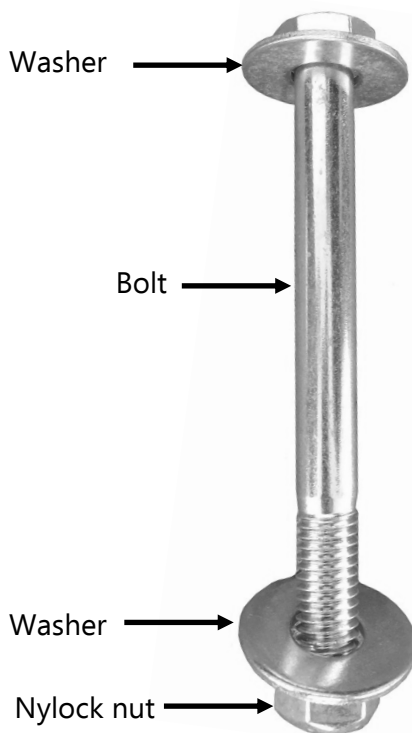
Bolt package labeled #1

Bolt package labeled #2

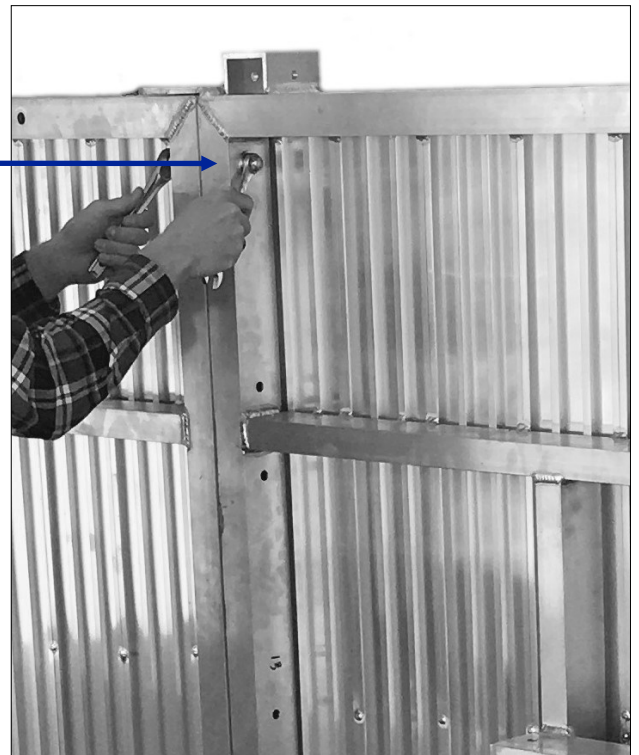
Parts Required:

- ☐ (7) 1/2" x 5" bolts
- ☐ (14) 1/2" washers
- ☐ (7) 1/2" nylock nuts
- ☐ (4) 3/8" x 3" bolts
- ☐ (4) 3/8" washers
- ☐ (4) 3/8" nylock nuts

- ◆ Stand trailer bed on its side and insert 7 bolts, **1/2" x 5"**, under deck to attach the two deck pieces firmly together. Have someone help to hold the deck to make installation easier.
- ◆ Insert all bolts under deck BEFORE tightening any nylock nuts. Make sure to follow the left picture below exactly for bolt installation.
- ◆ Tighten all nuts to 17-19 ft-lbs and firm.



Bolt installation
underneath deck



Step 2, cont.

Tools Needed:

Wrenches: 3/4" and 9/16"

Sockets: 3/4" and 9/16"

Bolt package labeled #1

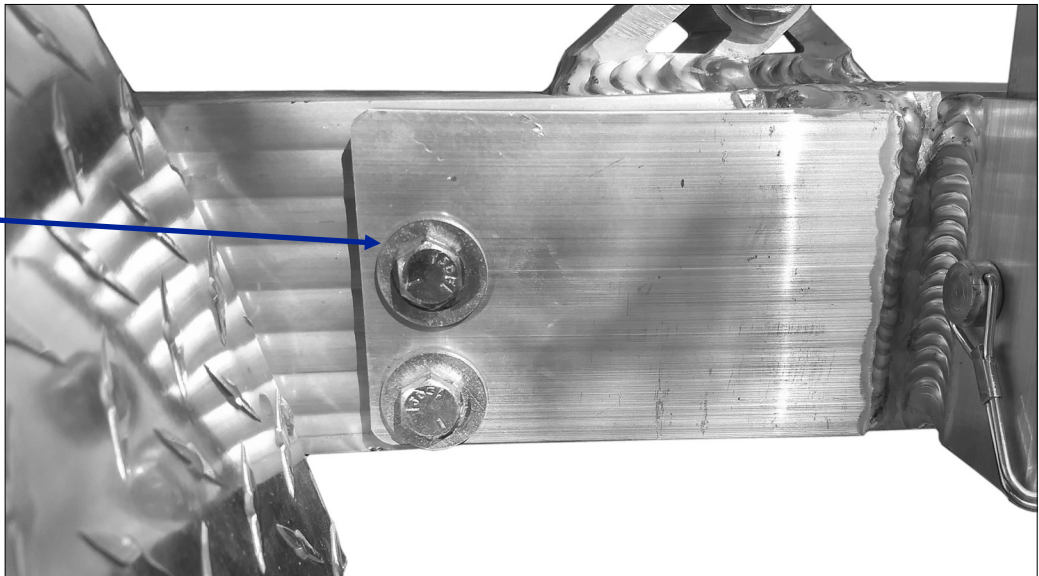
Bolt package labeled #2

Parts Required:

- ☐ (7) 1/2" x 5" bolts
- ☐ (14) 1/2" washers
- ☐ (7) 1/2" nylock nuts
- ☐ (4) 3/8" x 3" bolts
- ☐ (4) 3/8" washers
- ☐ (4) 3/8" nylock nuts

- ◆ After installing the bolts underneath the deck, install the 4 bolts, **3/8" x 3"**, on the sides of the deck—2 on each side. The two bolts that go into the side on the ground may need to be installed once the trailer is flat on the ground.

Bolt installation on the side of the trailer. Please note only 1 washer is required for each bolt



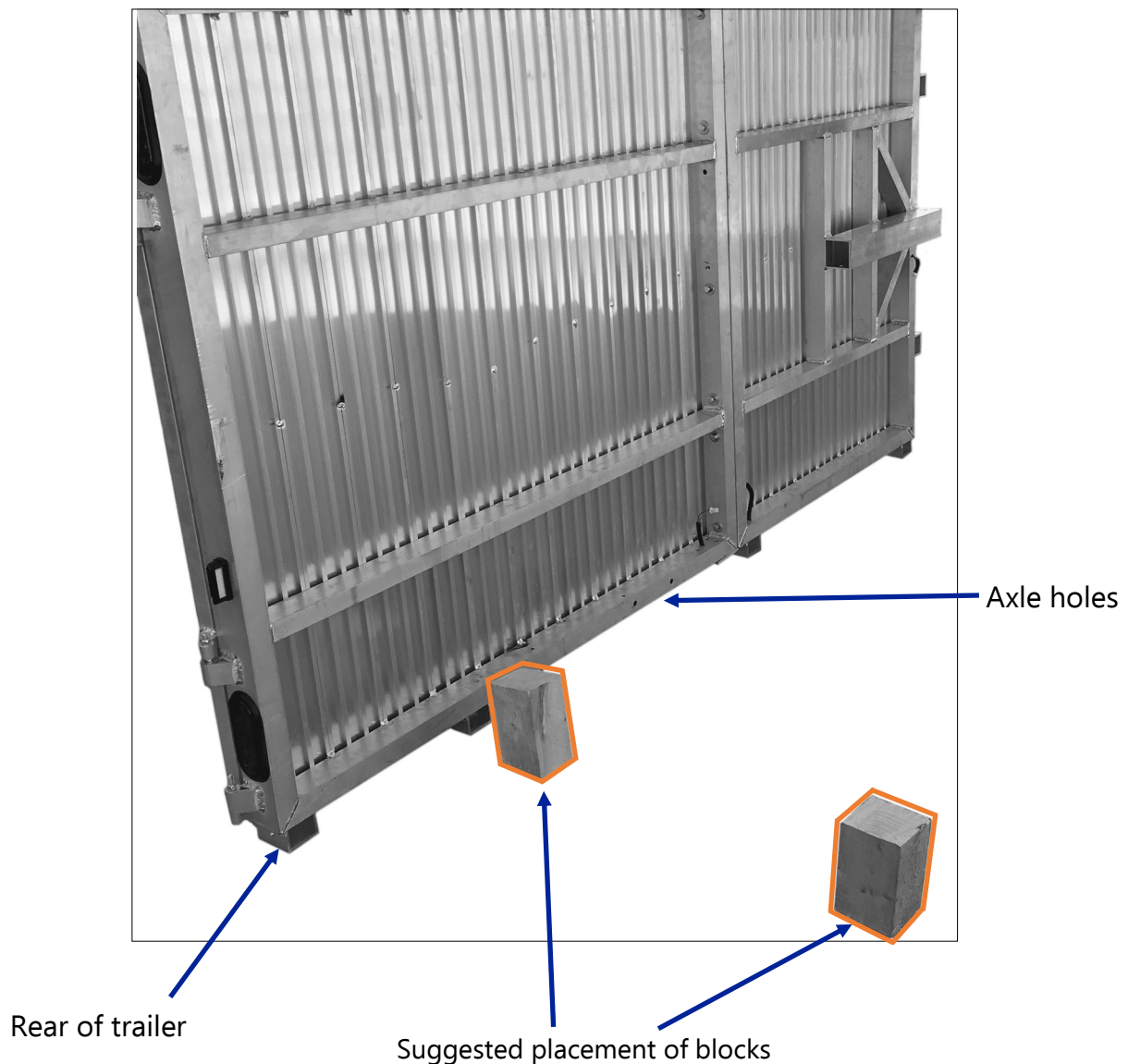
- ◆ Tighten the 3/8"x3" side bolts to 10 ft-lbs and firm.
- ◆ Plug both wiring plugs together (one on each side where the deck folds). It is recommended you tape the plugs with electrical tape to ensure a longer life for the wiring.

Step 3: Blocking the Deck

Tools Needed:

Blocks, found in packaging

- ◆ Place blocks on flat surface.
- ◆ Lay deck on blocks standing under the rear of deck; it is recommended to place them halfway between the axle location and the rear of the trailer. These blocks prop the rear of the trailer up so the axle can slide under the deck.
- ◆ Make sure to not crush the wiring plugs under the deck



Step 4: Installing the Axle

Tools Needed:

Wrench: 3/4"

Socket: 3/4"

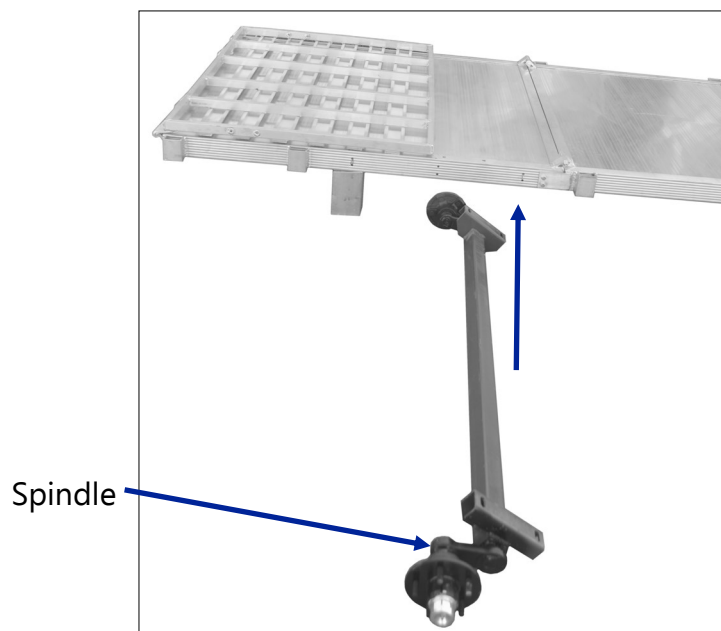
Bolt package labeled #1

1 small block, included in packaging

Parts Required:

- ☐ (4) 1/2" x 5" bolts
- ☐ (4) 1/2" nylock nuts
- ☐ (8) 1/2" washers
- ☐ Axle

- ◆ Slide axle under deck. Make sure spindle is toward the rear of the trailer.



- ◆ Place axle on small block (about 4" x 4" in size) to level mounting bracket with deck.



Step 4, cont.

Tools Needed:

Wrench: 3/4"

Socket: 3/4"

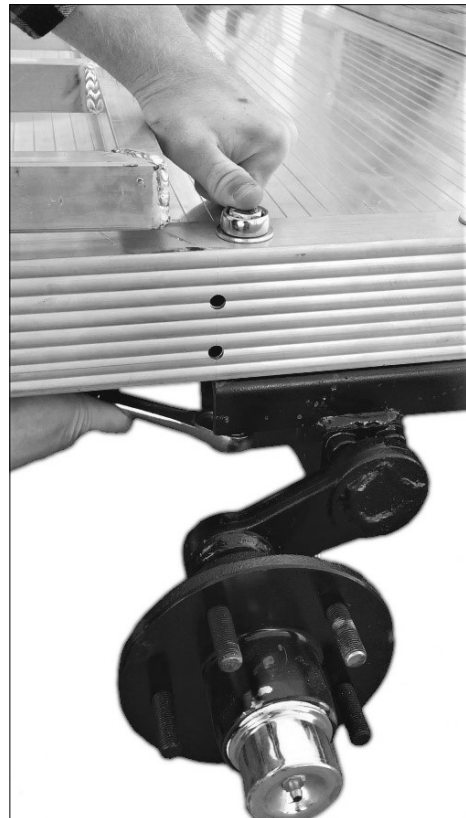
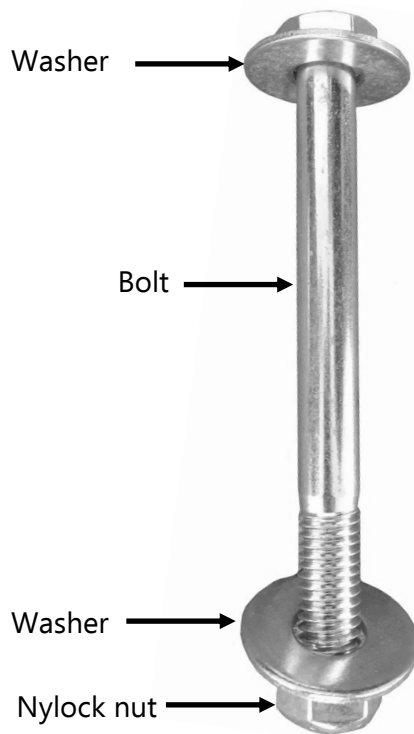
Bolt package labeled #1

1 small block, included in packaging

Parts Required:

- ☐ (4) 1/2" x 5" bolts
- ☐ (4) 1/2" nylock nuts
- ☐ (8) 1/2" washers
- ☐ Axle

- ♦ Insert axle bolts to attach axle, **1/2" x 5"**, with washers on each end. Make sure to follow the picture of the bolt below exactly when installing.
- ♦ Tighten axle bolts to 19-20 ft-lbs and firm.
- ♦ Repeat bolt installation for other side.



Step 5: Installing the Fenders

Tools Needed:

Wrench: 1/2"

Socket: 1/2"

Drill bit: 5/16"

Bolt package labeled #2

Parts Required:

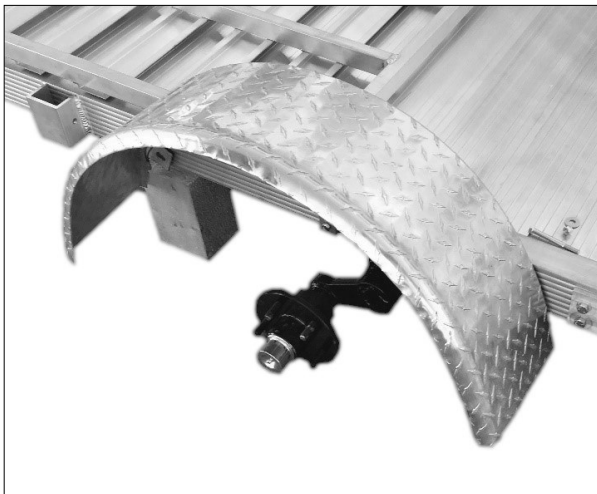
- ☐ (8) 5/16" x 3" bolts
- ☐ (12) 5/16" nylock nuts
- ☐ (4) 5/16" washers
- ☐ (4) 5/16" x 1" bolts
- ☐ (2) Fender stiffeners
- ☐ (2) Fenders

- ♦ Install fender stiffeners as shown in picture, with 2 bolts, **5/16" x 3"** (no washers).
DO NOT TIGHTEN YET.

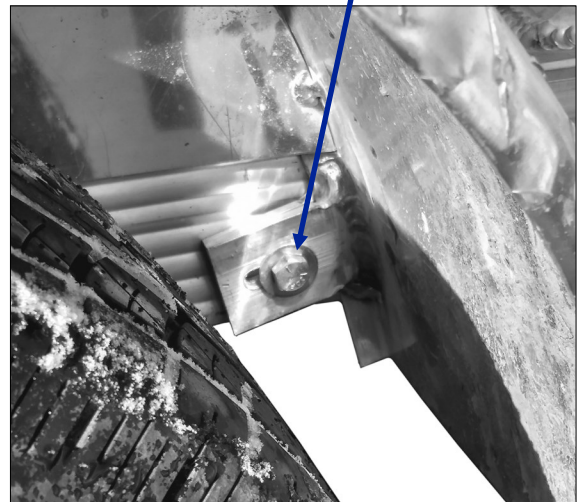


Bolt installation on fender stiffeners

- ♦ Line fender up with the holes that are on either side of the axle. Bolt fender in place, using one washer on **5/16" x 3"** bolts DO NOT TIGHTEN YET.



Bolt installation with only 1 washer



Step 5, cont.

Tools Needed:

Wrench: 1/2"

Socket: 1/2"

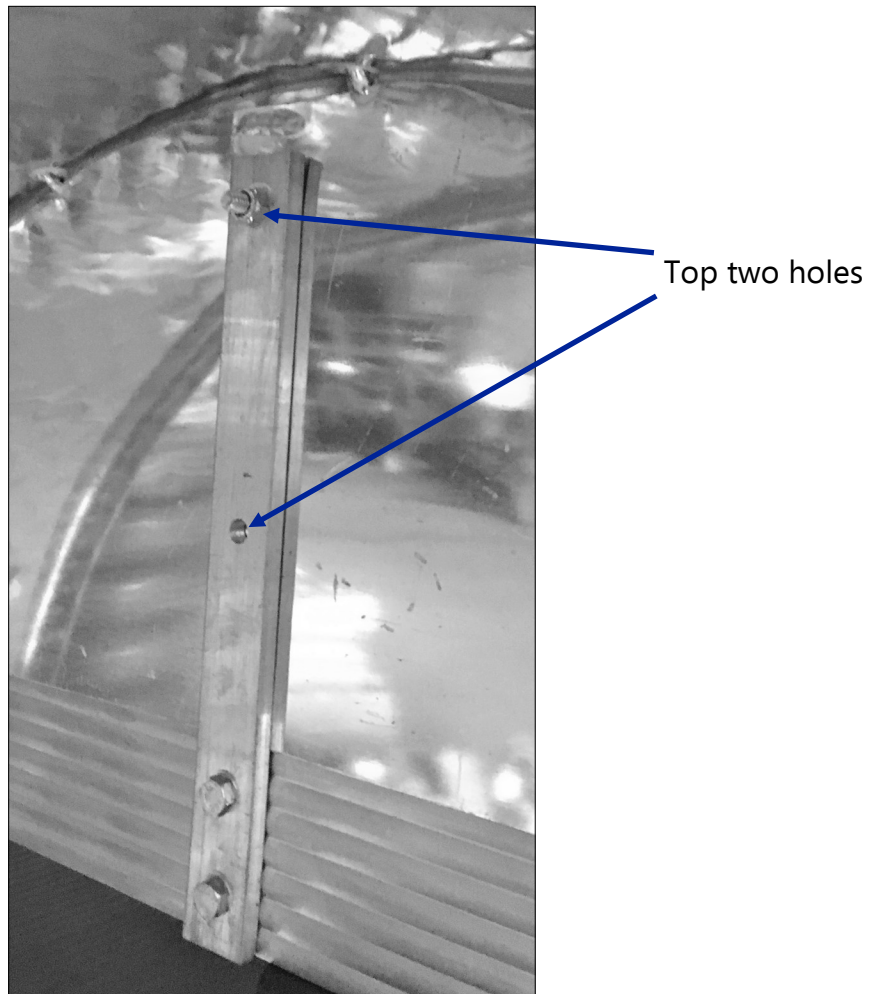
Drill bit: 5/16"

Bolt package labeled #2

Parts Required:

- ☐ (8) 5/16" x 3" bolts
- ☐ (12) 5/16" nylock nuts
- ☐ (4) 5/16" washers
- ☐ (4) 5/16" x 1" bolts
- ☐ (2) Fender stiffeners
- ☐ (2) Fenders

- ♦ Use the top two holes in the fender stiffener bar as guides to drill 2 holes into the fender using the **5/16"** drill bit
- ♦ Insert (2) **5/16" x 1"** bolts (no washers) into the top two holes of the stiffener bar. Tighten all fender bolts now.
- ♦ Repeat step 5 on other side.



Step 6: Installing the Coupler and Chain

Tools Needed:

Wrench: 5/8"

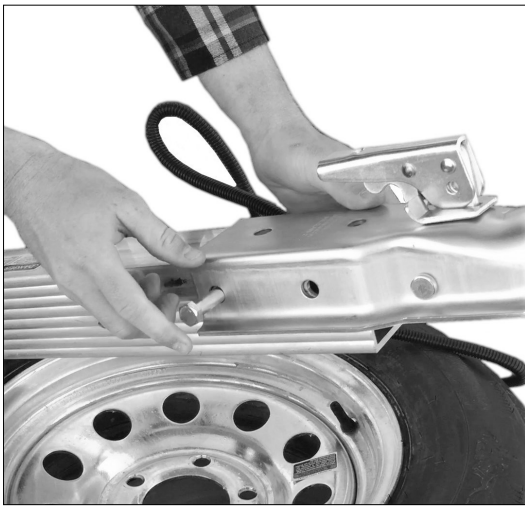
Socket: 5/8"

Bolt package labeled #2

Parts Required:

- ☐ (2) 7/16" x 4" bolts
- ☐ (2) 7/16" nylock nuts
- ☐ Safety chain
- ☐ 2" coupler

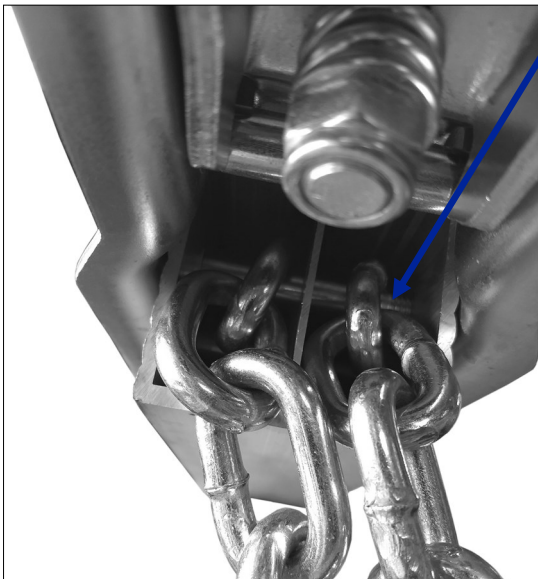
- ♦ Install coupler's rear bolt first. It is suggested to prop it on something to make installation easier (like a tire, as shown in picture).



WARNING

DO NOT over tighten as this may cause the coupler to jam or stick on the vehicle's ball hitch.

- ♦ Insert safety chain ends inside tongue tube and insert front coupler bolt through the coupler, tongue, and safety chains. Tighten both bolts to 16 ft-lbs and firm.



Front coupler bolt

WARNING

DO NOT over tighten as this may cause the coupler to jam or stick on the vehicle's ball hitch.

Step 7: Installing the Drawbar/Tongue

Tools Needed:

Wrench: 5/8"

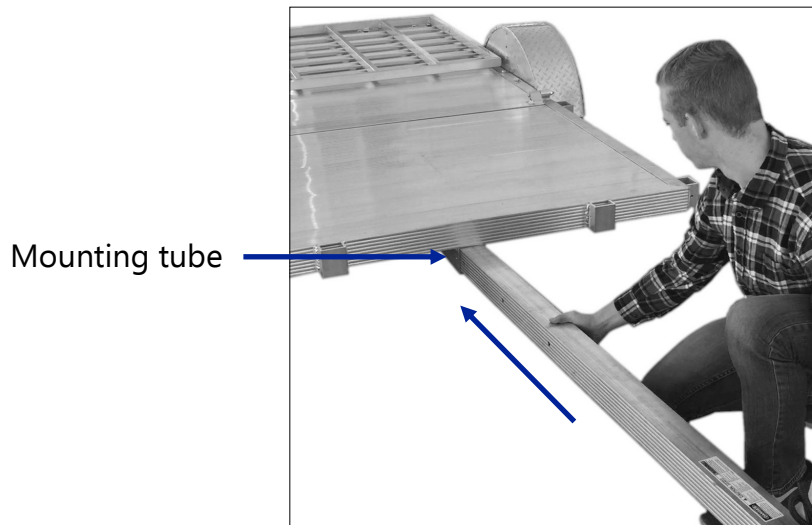
Socket: 5/8"

Bolt package labeled #2

Parts Required:

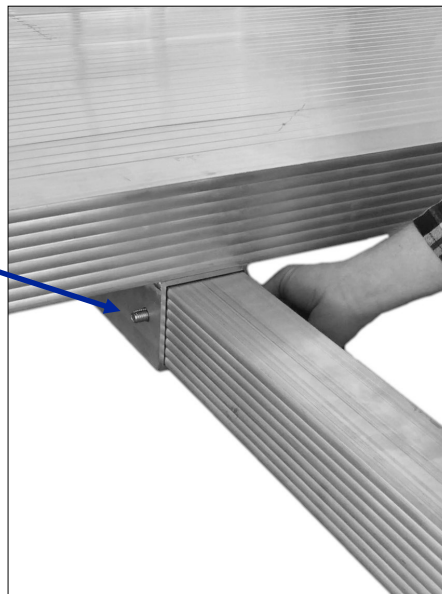
- ☐ (3) 7/16" x 4" bolts
- ☐ (3) 7/16" nylock nuts
- ☐ Drawbar/tongue

- ♦ Install tongue drawbar into mounting tube (found underneath the front of the deck) as shown in picture.



- ♦ Insert the front bolt through tongue and trailer mounting tube. You may install the other two bolts after the jack and tires are mounted (steps 8 and 9).
- ♦ Tighten bolts to 15-17 ft-lbs and firm.

Bolt installation
on mounting
tube



Step 8: Installing the Jack

Tools Needed:

Wrench: 9/16"

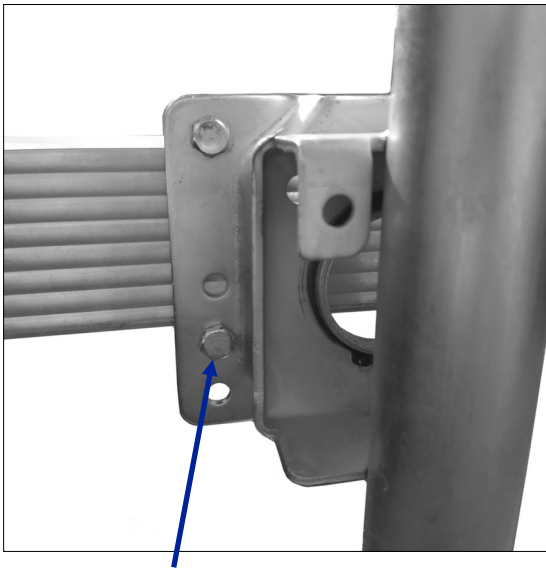
Socket: 9/16"

Parts Required:

□ Jack

Use bolt package affixed to swivel jack assembly containing: (4) 3/8" x 4" bolts and (4) 3/8" nylock locknuts

- ♦ Install swivel jack onto the tongue drawbar, with the handle on the driver's side of the vehicle
- ♦ Place the middle of the jack approximately 27 inches from the deck edge



Make sure to place bolts in the **middle** hole



- ♦ Insert bolts (4) through swivel jack housing and rear bracket (one on each corner). Refer to picture below for where to place the bolts. **Do not tighten bolts until all 4 are inserted with the nylock nuts attached.**
- ♦ Tighten bolts to 15 ft-lbs or firm.

Step 9: Installing the Tires

Tools Needed:

Socket: 13/16" (or tire iron wrench)

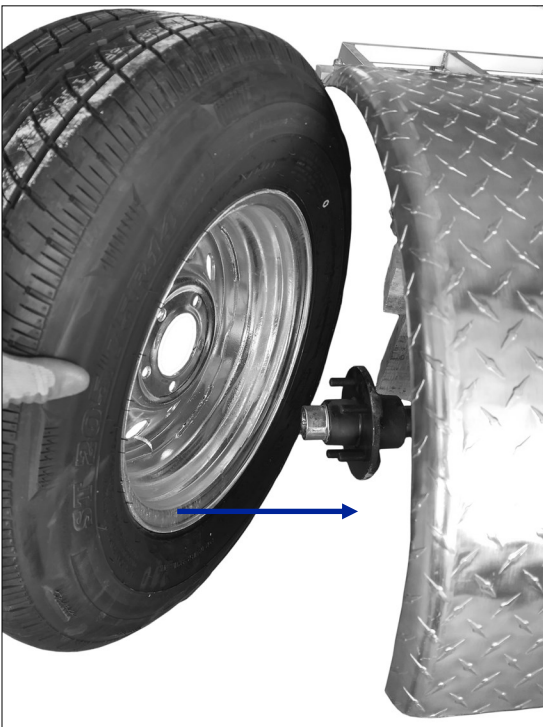
Bolt package labeled #1

Parts Required:

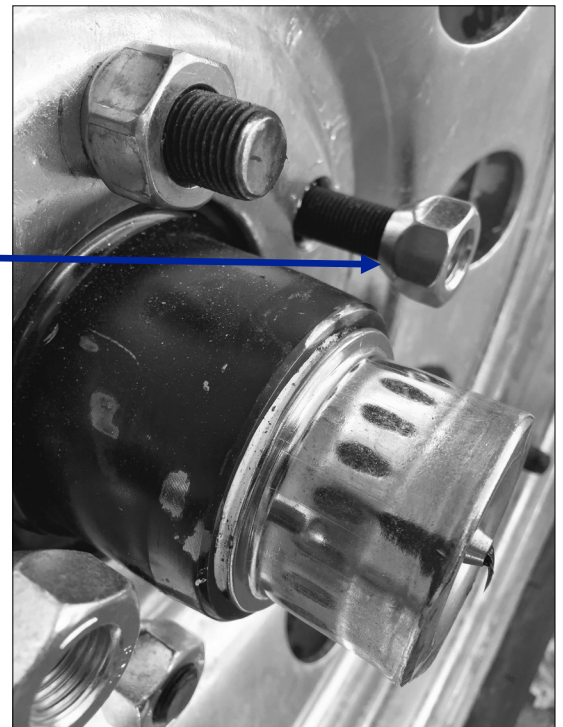
- ☐ (10) lug nuts
- ☐ (2) tires, 205/75R14

You may want a floor jack or have a helper lift to make this step easier.

- ◆ Mount tires (ensure the proper orientation of the wheel as shown below).
- ◆ Attach lug nuts with the appropriate orientation as shown in the picture. The tapered end of the nut points toward the wheel.



Tapered end
toward the
wheel



Step 9 cont.

Tools Needed:

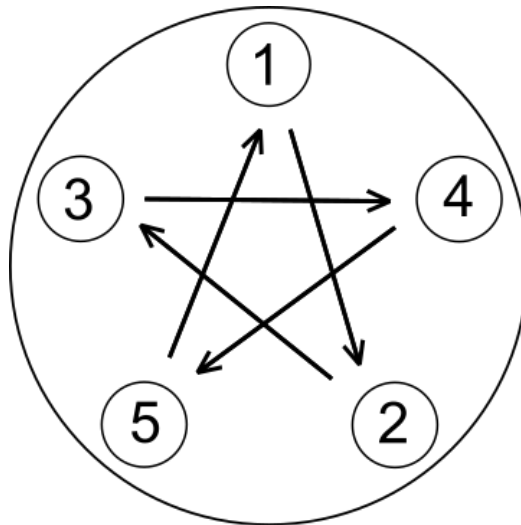
Socket: 13/16" (or tire iron wrench)

Bolt package labeled #1

Parts Required:

- ☐ (10) lug nuts
- ☐ (2) tires, 205/75R14

- ♦ Tighten lug nuts in a star pattern (see below) to 90 ft-lbs. minimum and 100 ft-lbs. maximum
- ♦ All lug nuts should be retorqued after assembly and after 50 miles to ensure a safe ride



Star pattern for tightening lug nuts

- ♦ **Make sure to install the remaining two bolts into the tongue and trailer mounting tube.**
- ♦ Plug wire harness together at the tongue. It is recommended you tape the connector with electrical tape to ensure a longer life.



Step 10: Installing the Removable Sides

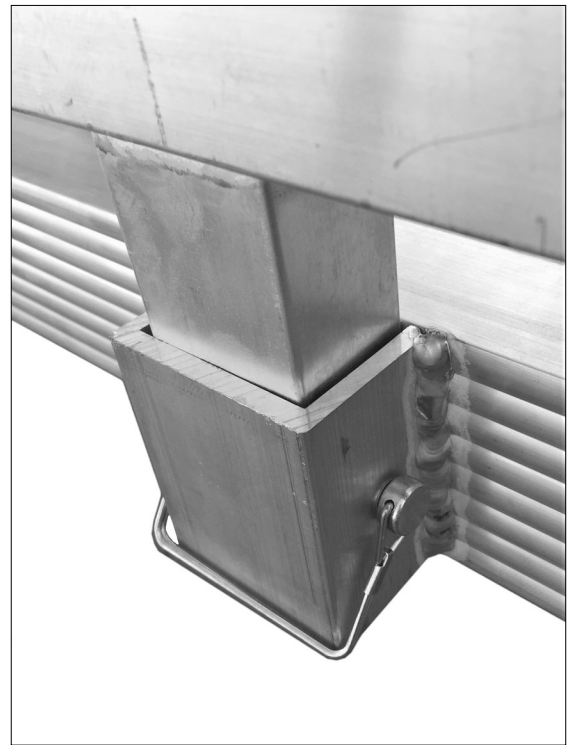
Tools Needed:

Package with wire clips
Rubber Mallet (optional)

Parts Required:

- ☐ (10) large wire square lock pins
- ☐ (5) removable side pieces

- ♦ Install removable sides.
- ♦ Line up bottom of stake and stake pocket to align the holes. Use rubber mallet to gently insert the sides. Install large wire square lock pins into each stake pocket while lining up and going through the removable side stake's hole.



Step 11: Installing the Tailgate Bar

Tools Needed:

Socket: 1/2"

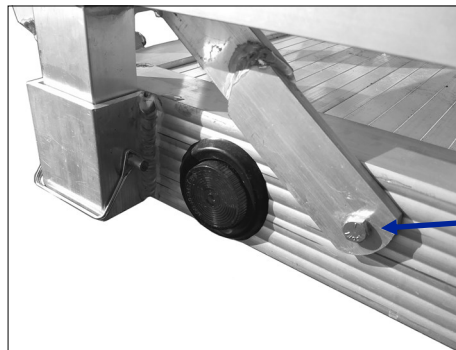
Wrench: 1/2"

Bolt package #2 and package with wire clips

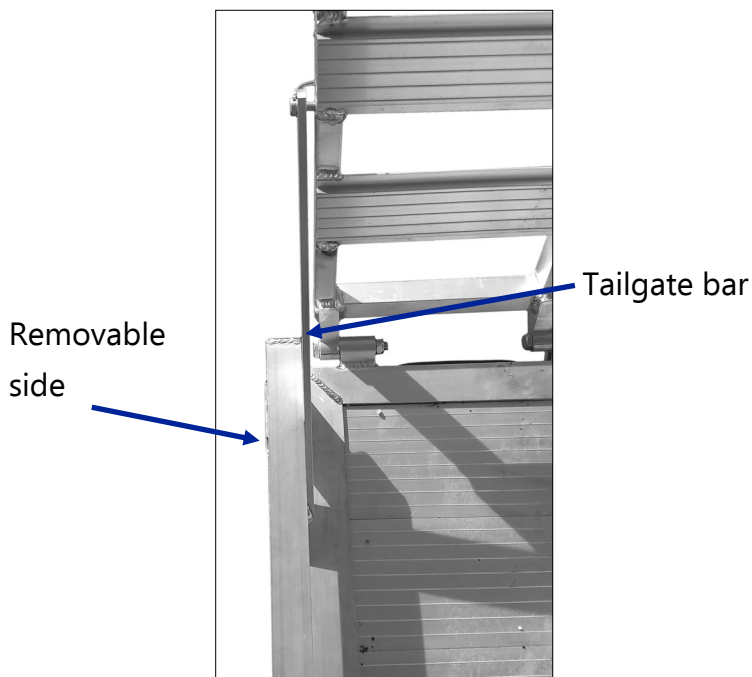
Parts Required:

- ☐ (2) 5/16" x 3" bolts
- ☐ (2) 5/16" nylock nuts
- ☐ (2) tailgate bars
- ☐ (2) small wire round lock pins

- ◆ Install tailgate sidebars. Refer to picture for correct end to attach to the trailer frame.



- ◆ Insert bolt into lower end of tailgate bar where it's mounted on the frame. Make sure the bar is on the inside of the removable side. Tighten nut until snug, but loose enough for the bar to pivot slightly.
- ◆ Insert small wire round lock pin into upper end of bar to attach the bar to the tailgate. Repeat for the other side of trailer.



Step 12: Inspect the Trailer

Tools Needed:

None

- ♦ Inspect trailer after assembly to ensure that all steps were completed and there are no loose nuts or bolts.
- ♦ Connect the trailer to a properly wired vehicle to ensure all wiring is functional.
- ♦ In the event there is a slight drop at the rear of the trailer bed from the front, do not worry. This occurs sometimes because of manufacturing tolerances. The trailer deck is still fully functional and is not damaged.
- ♦ If your state requires you to license your trailer, you will also need to drill holes into the frame to hang your license plate. As not all states require this, we have found it most practical for the owner to mount the license plate as required by their state; make sure to check your state requirements when licensing your trailer.

Step 13: Submit Warranty for Trailer

Required:

Warranty Form—found on MSO

- ♦ Remember to send in the warranty form. To register the warranty, fill out the form on MSO and mail it to:

Silverwing Trailers
P.O. Box 393
Soda Springs, ID, 83276

- ♦ Make sure to read through the warranty (found in owner's manual) to understand what is and is not included, should you need us to fulfill a warranty.

We strive for 100% customer satisfaction, and value the feedback of our customers. If you leave a review at the retailer of your purchase and let us know, we will mail you a free Silverwing Trailers hat (pictured below). The best method to contact us is via email at info@silverwingtrailers.com.



Email: info@silverwingtrailers.com